

# Japan

## Rating report

### Rating rationale

**Wealthy, diversified and sophisticated economy:** Japan benefits from its high wealth levels as well as diversified and competitive economy, supported by sophisticated high-tech industries and the presence of highly innovative firms. These act as crucial supports for the single-A sovereign rating.

**Strong profile of sovereign debt and an independent monetary policy:** Japan benefits from its very strong funding flexibility with Japanese government bonds (JGBs) as a global safe asset and still low rates by comparison against those of global sovereigns (despite the recent rises in yields). In addition, the sovereign has a large domestic investor base, significant government assets, and continued market interventions from the comparatively accommodative policies of the Bank of Japan (BoJ) under an independent monetary policy. These factors reduce the risks from comparatively weak long-run budgetary fundamentals and the very elevated gross public debt.

**A robust external position and reserve currency:** the sovereign's status as the globe's leading external creditor is driven by structural current-account surpluses, elevated domestic savings, alongside a sophisticated domestic banking system. This, combined with moderate gross external debt and global safe-haven and reserve-currency statuses, curtails the vulnerabilities to external crises and risks concerning external-debt sustainability.

**Ratings challenges:** i) exceptionally elevated gross government debt; ii) low moderate nominal growth potential reflecting a shrinking and ageing population and years of record low inflation; and iii) rising pension and healthcare-related costs.

Figure 1: Japan's sovereign-rating drivers

Risk pillars		Quantitative		Reserve currency*	Political risk**	Qualitative****	Final rating
		Weight	Indicative rating	Notches	Notches	Notches	
Domestic economic risk		35%	aaa	JPY	Japan	- 2/3	A
Public finance risk		20%	b+			- 1/3	
External economic risk		10%	aaa			1/3	
Financial stability risk		10%	aa			- 1/3	
ESG risk	Environmental factors	5%	bbb-	[+1]	[-0]	- 1/3	
	Social factors	7.5%	b-			0	
	Governance factors	12.5%	aaa			- 1/3	
Sovereign Quantitative Model***		aa-				-2	
Additional considerations						0	

\*The reserve-currency quantitative adjustment applies to currencies in the IMF's Special Drawing Rights (SDR) basket.

\*\*The political-risk quantitative adjustment is based on the World Bank's Political Stability & Absence of Violence/Terrorism index.

\*\*\*The Rating Committee approved an indicative rating of 'aa-'.

\*\*\*\*The qualitative scorecard analyst adjustments, capped at one notch per rating pillar, are weighted equally with an aggregate adjustment rounded to the nearest integer. For details, please see Scope's [Sovereign Rating Methodology](#). Source: Scope Ratings.

### Foreign currency

Long-term issuer rating/Outlook

A/Stable

Senior unsecured debt

A/Stable

Short-term issuer rating/Outlook

S-1/Stable

### Local currency

Long-term issuer rating/Outlook

A/Stable

Senior unsecured debt

A/Stable

Short-term issuer rating/Outlook

S-1/Stable

### Lead Analyst

Eiko Sievert

+49 69 6677389-79

[e.sievert@scoperatings.com](mailto:e.sievert@scoperatings.com)

### Team Leader

Alvise Lennkh-Yunus

+49 69 6677389-85

[a.lennkh@scoperatings.com](mailto:a.lennkh@scoperatings.com)

## Credit strengths and challenges

### Credit strengths

- A wealthy, competitive and diversified economy
- JGBs as a safe asset, strong funding flexibility, very-low rates, debt monetisation
- Robust external position and yen as a global reserve currency

### Credit challenges

- Very elevated sovereign debt stock
- Comparatively low nominal growth potential
- Rising pension and healthcare-related costs

## Outlook and rating triggers

The Stable Outlook underscores the view that risks for the ratings are balanced.

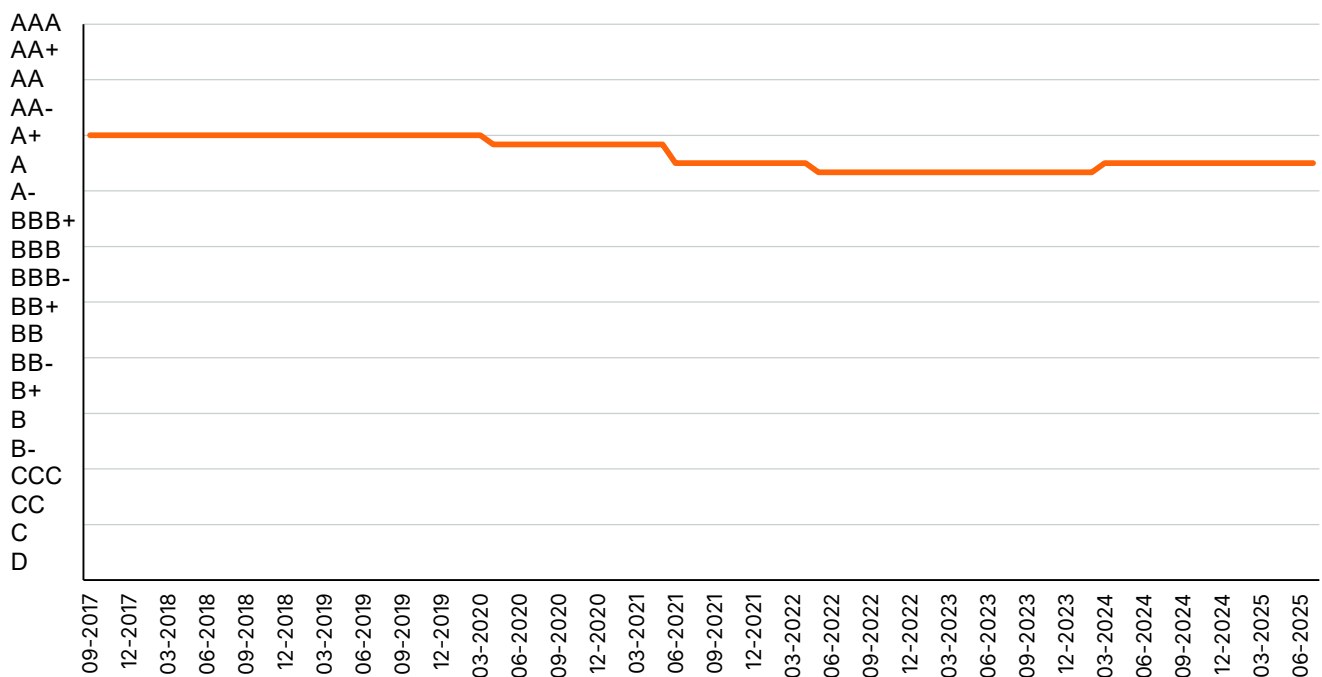
### Positive rating-change drivers

- Public debt-to-GDP declines meaningfully, supported by stronger nominal economic growth and/or budgetary-consolidation steps
- The achievement of stronger sustainable nominal growth

### Negative rating-change drivers

- Debt sustainability weakens significantly, due to material rise in interest-payment burden or weakening debt structure
- The government sees significant reductions in its funding flexibility and/or the weakening of the reserve-currency status of yen

Figure 2: Rating history



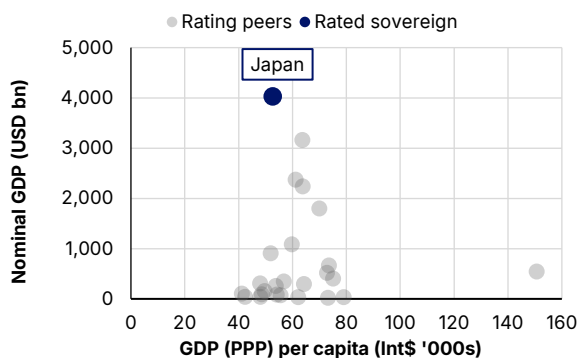
Foreign-currency long-term issuer rating. Positive/Negative Outlooks are treated with a +/-0.33-notch adjustment. Credit Watch positive/negative with a +/-0.67-notch adjustment. Source: Scope Ratings.

## Domestic economic risk

### Overview of Scope's assessments of Japan's Domestic Economic Risk

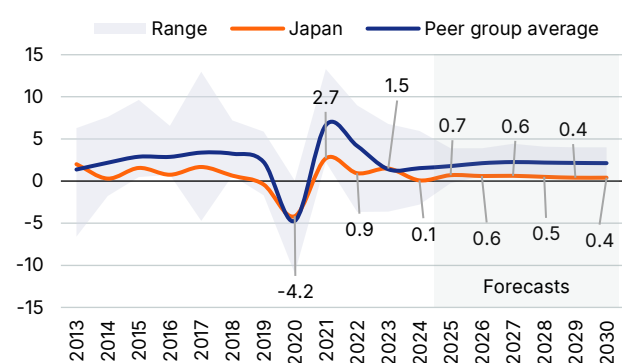
SQM <sup>1</sup> indicative rating	Analytical component	Assessment	Notch adjustment	Rationale
aaa	Growth potential and outlook	Weak	-1/3	Comparatively low growth potential despite ongoing structural reforms; shrinking population and workforce present challenges
	Monetary policy framework	Neutral	0	The BoJ is a leading global central bank; the ultra-accommodative policy has held rates low and monetised half of the government debt; independent monetary policy
	Macroeconomic stability and sustainability	Weak	-1/3	A large, competitive and diversified economy; but shrinking population and workforce present considerable challenges for long-run economic growth

Figure 3: Nominal GDP and GDP per capita (2024E)



Source: IMF World Economic Outlook (WEO), Scope Ratings

Figure 4: Real GDP growth, %



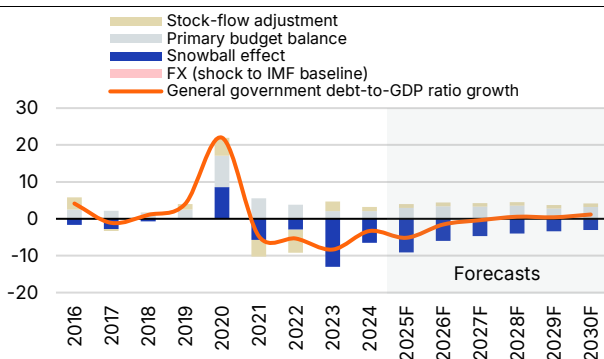
Source: IMF WEO, Scope Ratings forecasts

## Public finance risk

### Overview of Scope's assessments of Japan's Public Finance Risk

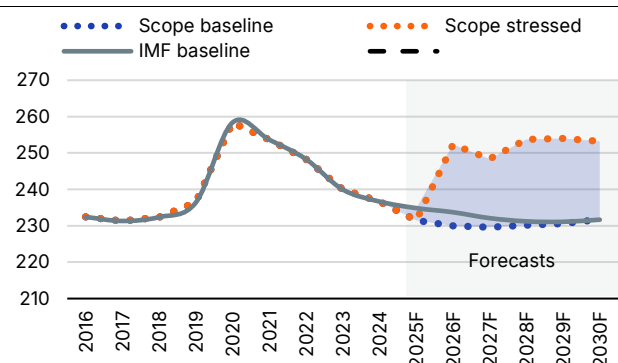
SQM indicative rating	Analytical component	Assessment	Notch adjustment	Rationale
b+	Fiscal policy framework	Weak	-1/3	Persistent budget deficits exacerbated by an ageing population and associated shrinking tax base; near-term spending pressures
	Long-term debt trajectory	Weak	-1/3	A very-elevated public debt ratio poses sustainability challenges
	Debt profile and market access	Strong	+1/3	Excellent market access and still low rates, smooth redemption profile but elevated financing requirements, a large domestic investor base, debt denominated entirely in yen, significant monetisation of the debt, world's largest single creditor nation

Figure 5: Contributions to change in debt levels, pps of GDP



Source: IMF WEO, Scope Ratings forecasts

Figure 6: Debt-to-GDP forecasts, % of GDP



Source: IMF WEO, Scope Ratings forecasts

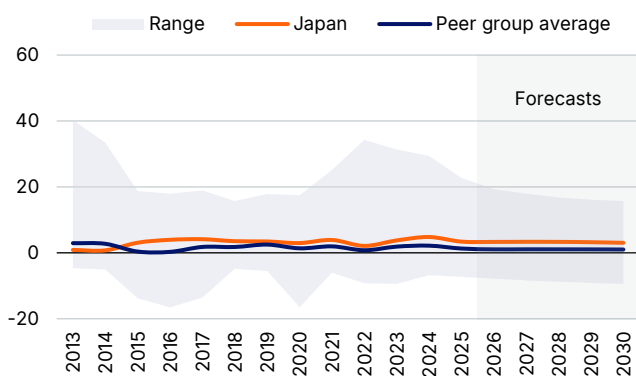
<sup>1</sup> Sovereign Quantitative Model

## External economic risk

### Overview of Scope's assessments of Japan's *External Economic Risk*

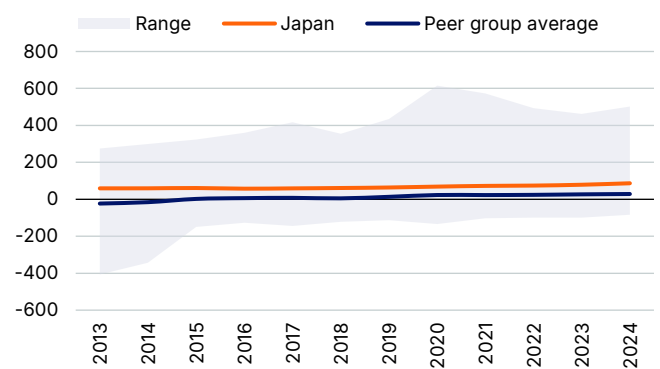
SQM indicative rating	Analytical component	Assessment	Notch adjustment	Rationale
aaa	Current account resilience	Strong	+1/3	A record of current-account surpluses supported by a diversified export base and significant external-creditor position
	External debt structure	Weak	-1/3	A moderate external-debt stock; but a significant share of external liabilities has a short-term maturity
	Resilience to short-term external shocks	Strong	+1/3	The reserve-currency status of yen, large forex reserves (especially for an advanced economy) and strong net external creditor position

Figure 7: Current-account balance, % of GDP



Source: IMF WEO forecasts, Scope Ratings

Figure 8: Net international investment position (NIIP), % GDP



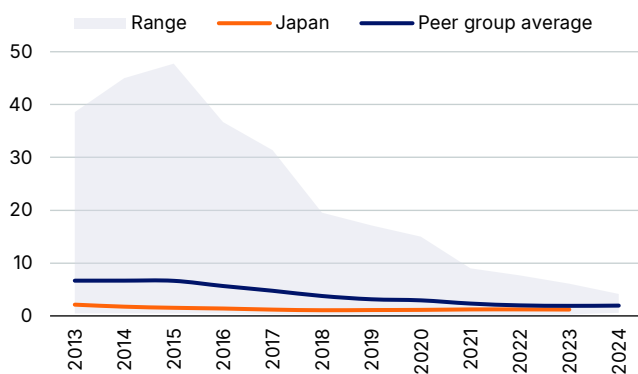
Source: IMF, Scope Ratings

## Financial stability risk

### Overview of Scope's assessments of Japan's *Financial Stability Risk*

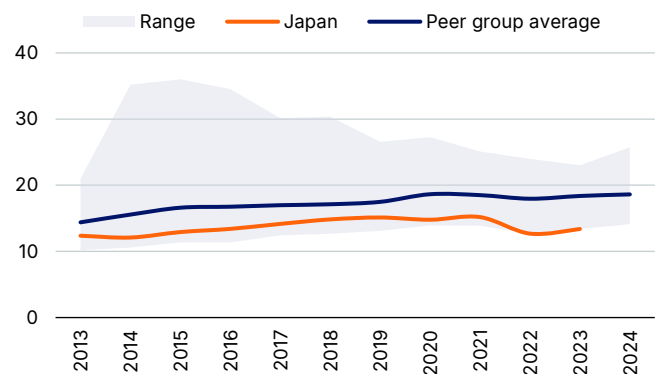
SQM indicative rating	Analytical component	Assessment	Notch adjustment	Rationale
aa	Banking sector performance	Weak	-1/3	Banking-system profitability challenges but gradual improvement as the era of negative rates has ended; low NPLs; comparatively moderate tier-1 ratio; significant banking-system liquidity
	Financial sector oversight and governance	Neutral	0	Strong oversight frameworks under the BoJ and the Financial Services Agency
	Financial imbalances	Neutral	0	Moderate levels of private-sector debt; modest private-sector credit growth

Figure 9: NPLs, % of total loans



Source: World Bank (WB), Scope Ratings

Figure 10: Tier 1 capital, % of risk-weighted assets



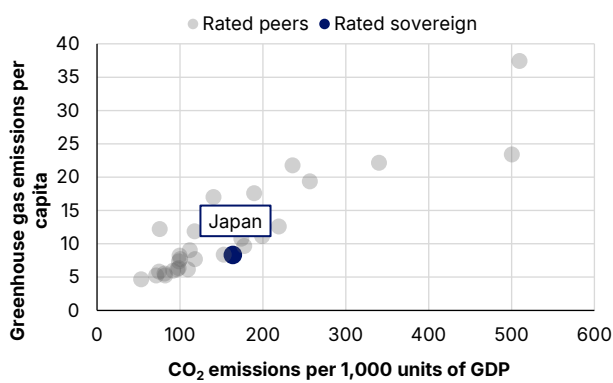
Source: IMF, Scope Ratings

## Environmental, Social and Governance (ESG) risk

### Overview of Scope's assessments of Japan's ESG Risk

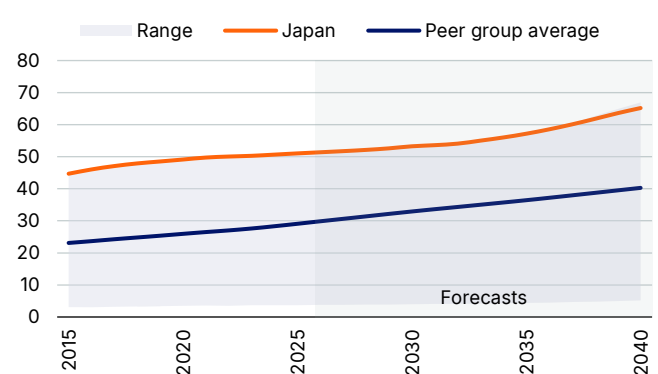
SQM indicative rating	Analytical component	Assessment	Notch adjustment	Rationale
<b>a+</b>	Environmental factors	Weak	-1/3	A high exposure to natural-disaster risks; limited natural-resource endowments
	Social factors	Neutral	0	Low inequality, strong social-insurance system; adverse demographics pressure social-care systems; very-strong health metrics; deteriorating social conditions for the elderly
	Governance factors	Weak	-1/3	High-quality democratic institutions although historical government instability and recent early parliamentary elections

Figure 11: CO<sub>2</sub> emissions per GDP/per capita, mtCO<sub>2</sub>e (2023)



Source: European Commission (EC), Scope Ratings

Figure 12: Old-age dependency ratio, %



Source: United Nations (UN), Scope Ratings

## Reserve-currency adjustment

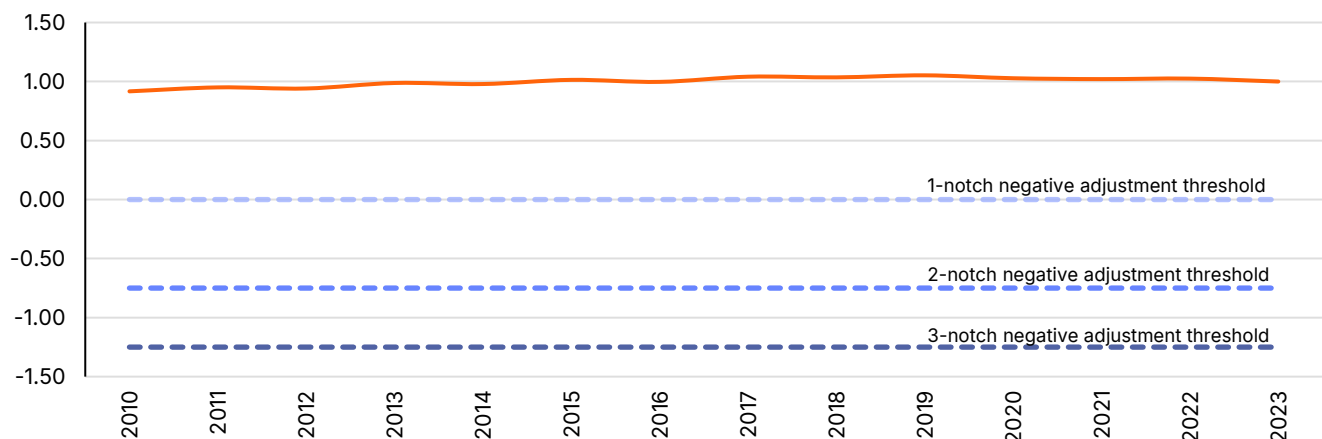
### IMF SDR basket and Scope reserve-currency adjustment

Currency	U.S. dollar	Euro	Chinese yuan	Japanese yen	Pound sterling	Other
IMF SDR basket weights, %	43.4	29.3	12.3	7.6	7.4	0.0
Positive adjustment, notches	3	1	1	1	1	0

Source: IMF, Scope Ratings

## Political-risk adjustment

Figure 13: WB Political Stability & Absence of Violence/Terrorism index, Japan, three-year moving average



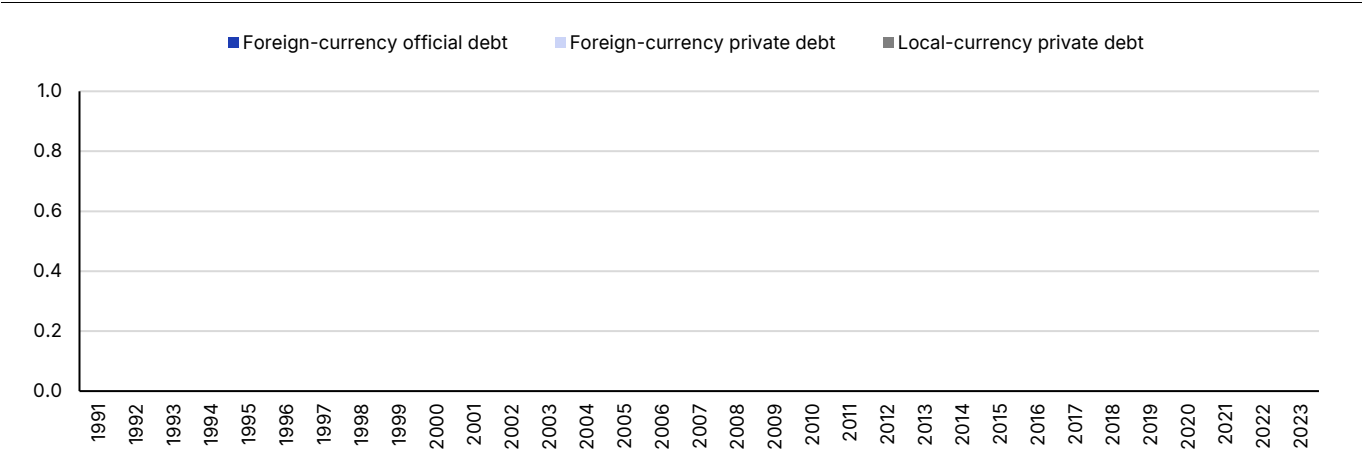
Source: WB, Scope Ratings

Additional considerations

No adjustment has been applied to the credit rating from additional considerations.

Appendix 1. Sovereign default history

Sovereign default history, USD bn



Depicted private-debt defaults may not always constitute a credit event under [Scope's credit-rating definitions](#).  
Source: [Bank of Canada–Bank of England Sovereign Default Database](#), Scope Ratings.

Appendix 2. Rating peers

Rating peers are related to sovereigns with an indicative rating in the same rating category or adjacent categories, as assigned by Scope's sovereign quantitative model after accounting for methodological reserve-currency and political-risk adjustments.

Peer group*
Belgium
France
Poland
Portugal
Spain
United Kingdom
United States

\*Select publicly-rated sovereigns only; the full sample of sovereign-rating peers may be larger.

Appendix 3. Economic development and default indicators

IMF Development Classification	Advanced economy
5-year USD CDS spread (bps) as of 8 August 2025	21.50

#### Appendix 4. Statistical table for selected SQM indicators

This table presents a selection of the indicators (24 out of 30 – with the governance indicator reflecting a composite of five indicators) used in Scope's quantitative model, in line with Scope's Sovereign Rating Methodology. The metrics and sources for the data presented here ensure comparability across global country peers and may therefore differ from data from national and other select international statistical series.

Pillar	Core variable	Source	2019	2020	2021	2022	2023	2024
Domestic Economic	GDP per capita (PPP), Int\$ '000s	IMF	42.8	42.6	44.7	48.5	51.2	52.7
	Nominal GDP, USD bn	IMF	5,118	5,054	5,039	4,262	4,213	4,026
	Real growth, %	IMF	-0.4	-4.2	2.7	0.9	1.5	0.1
	CPI inflation, %	IMF	0.5	0.0	-0.2	2.5	3.3	2.7
	Unemployment rate, %	WB	2.4	2.8	2.8	2.6	2.6	-
Public Finance	Public debt, % of GDP	IMF	236.4	258.4	253.7	248.3	240.0	236.7
	Net interest payment, % of government revenue	IMF	2.0	1.8	1.6	1.1	0.6	1.0
	Primary balance, % of GDP	IMF	-2.4	-8.4	-5.5	-3.8	-2.0	-2.1
External Economic	Current-account balance, % of GDP	IMF	3.4	3.0	3.9	2.1	3.8	4.8
	Total reserves, months of imports	WB	15.4	18.5	16.1	12.3	13.5	-
	NIIP, % of GDP	IMF	63.9	68.7	72.6	74.3	78.8	86.8
Financial Stability	NPL ratio, % of total loans	IMF	1.1	1.1	1.2	1.2	1.2	1.2
	Tier 1 ratio, % of risk-weighted assets	IMF	15.1	14.3	14.6	13.8	13.4	14.9
	Credit to the private sector, % of GDP	WB	177.4	195.5	195.6	196.6	195.2	196.9
ESG	CO <sub>2</sub> per EUR 1,000 of GDP, mtCO <sub>2</sub> e	EC	200.1	196.4	193.8	178.7	164.0	-
	Income share of bottom 50%, %	WID	18.6	18.6	18.6	18.6	18.6	
	Labour-force participation rate, %	WB	79.8	79.8	80.3	80.9	81.5	81.9
	Old-age dependency ratio, %	UN	48.5	49.1	49.7	50.1	50.3	50.7
	Composite governance indicators*	WB	1.3	1.4	1.4	1.4	1.4	-
	Political stability, index	WB	1.1	1.0	1.0	1.0	1.0	-

\*Average of the following five World Bank Worldwide Governance Indicators: Control of Corruption, Voice and Accountability, Rule of Law, Government Effectiveness, Regulatory Quality.

**Analyst**

Eiko Sievert  
+49 69 6677389-79  
[e.sievert@scoperatings.com](mailto:e.sievert@scoperatings.com)

**Associate Analyst**

Elena Klare  
+49 69 6677389-21  
[e.klare@scoperatings.com](mailto:e.klare@scoperatings.com)

**Team Leader**

Alvise Lennkh-Yunus  
+49 69 6677389-85  
[a.lennkh@scoperatings.com](mailto:a.lennkh@scoperatings.com)

**Applied methodologies**

[Sovereign Rating Methodology](#), January 2025

**Scope Ratings GmbH**

Lennéstraße 5, D-10785 Berlin  
Phone: +49 30 27891-0  
Fax: +49 30 27891-100  
[info@scoperatings.com](mailto:info@scoperatings.com)



Bloomberg: RESP SCOP  
[Scope contacts](#)  
[scoperatings.com](https://scoperatings.com)

**Disclaimer**

© 2025 Scope SE & Co. KGaA and all its subsidiaries including Scope Ratings GmbH, Scope Ratings UK Limited, Scope Fund Analysis GmbH, Scope Innovation Lab GmbH and Scope ESG Analysis GmbH (collectively, Scope). All rights reserved. The information and data supporting Scope's ratings, rating reports, rating opinions and related research and credit opinions originate from sources Scope considers to be reliable and accurate. Scope does not, however, independently verify the reliability and accuracy of the information and data. Scope's ratings, rating reports, rating opinions, or related research and credit opinions are provided 'as is' without any representation or warranty of any kind. In no circumstance shall Scope or its directors, officers, employees and other representatives be liable to any party for any direct, indirect, incidental or other damages, expenses of any kind, or losses arising from any use of Scope's ratings, rating reports, rating opinions, related research or credit opinions. Ratings and other related credit opinions issued by Scope are, and have to be viewed by any party as, opinions on relative credit risk and not a statement of fact or recommendation to purchase, hold or sell securities. Past performance does not necessarily predict future results. Any report issued by Scope is not a prospectus or similar document related to a debt security or issuing entity. Scope issues credit ratings and related research and opinions with the understanding and expectation that parties using them will assess independently the suitability of each security for investment or transaction purposes. Scope's credit ratings address relative credit risk, they do not address other risks such as market, liquidity, legal, or volatility. The information and data included herein is protected by copyright and other laws. To reproduce, transmit, transfer, disseminate, translate, resell, or store for subsequent use for any such purpose the information and data contained herein, contact Scope Ratings GmbH at Lennéstraße 5, D-10785 Berlin. Public Ratings are generally accessible to the public. Subscription Ratings and Private Ratings are confidential and may not be shared with any unauthorised third party.